

D D BD D
B B



PERBANAS
PERHIMPUNAN BANK NASIONAL

r
m





B

a a a a
a a a a
a a a
a a a
a



a a a a
a a a a



H



a a
a a a a
a a a
a a

a a a a a
a a



a a a a
a a a a
a a
a



a a a a a
a a a

aC2 C B

B B P B

R k

B B Bk PC C

aC2 C B

C P C P CaC Bk 3C C
C P C Bk CB

ak C Bk C C
B 3C C Bk PC C

3 C Bk CP aC 3

- E
- g
- g E
- g E
- g E E E E
- g E E E E E 7
- g E E E E E

k3 C C B

C Bk C 3C Bk PC C B
PC PC P 33 CBk PC C



B Bp bE E
B

B B B B B B B B B B B B B B B B
f RC C B B B B B B B B B B B B B B
B B B B BR B B B B B B B B
“ B B B B B B B B B f RC C B B B B
B B B B B B B B B B B B B B B
B B B B B B B B B B B B B B B
• B B B B B B BR B BR2B B B B (-
• B B B B B f RC C B EC B B B BC 2
• f RC C B B B f RC C B B B B B B B
b B B B B B B B B B B B B
• B B B B B B B B B B B B B B B
R B2 B2B BR B BC B B B BRC B B BSf
R B BB B B B B B B B B B B B B
• R B B B B B B B B B B B B B B
• R B B B B B B B B B B B B B B
• B B B B B B B B B B B B B B B
b B B B B B B B B B B B B B B
• B B B B B B B B B B B B B B B
B B B f RC C B B B B B B B B B B
B B B B B B B B B B B B B B B B
B B B B B B B B B B B B B B B B
B B f Bb B B B B B B B B B B
B B B B B B B B B B B B B B B
- B B B B B B B B B B B B B B B
B B B B B B B B B f RC C B B B B B
B B B B B B B B B B B B B B B B B

B B

ko D Bo D D

- C
- C B
- . B
- B
- B

UDkD Bo D D

B B B

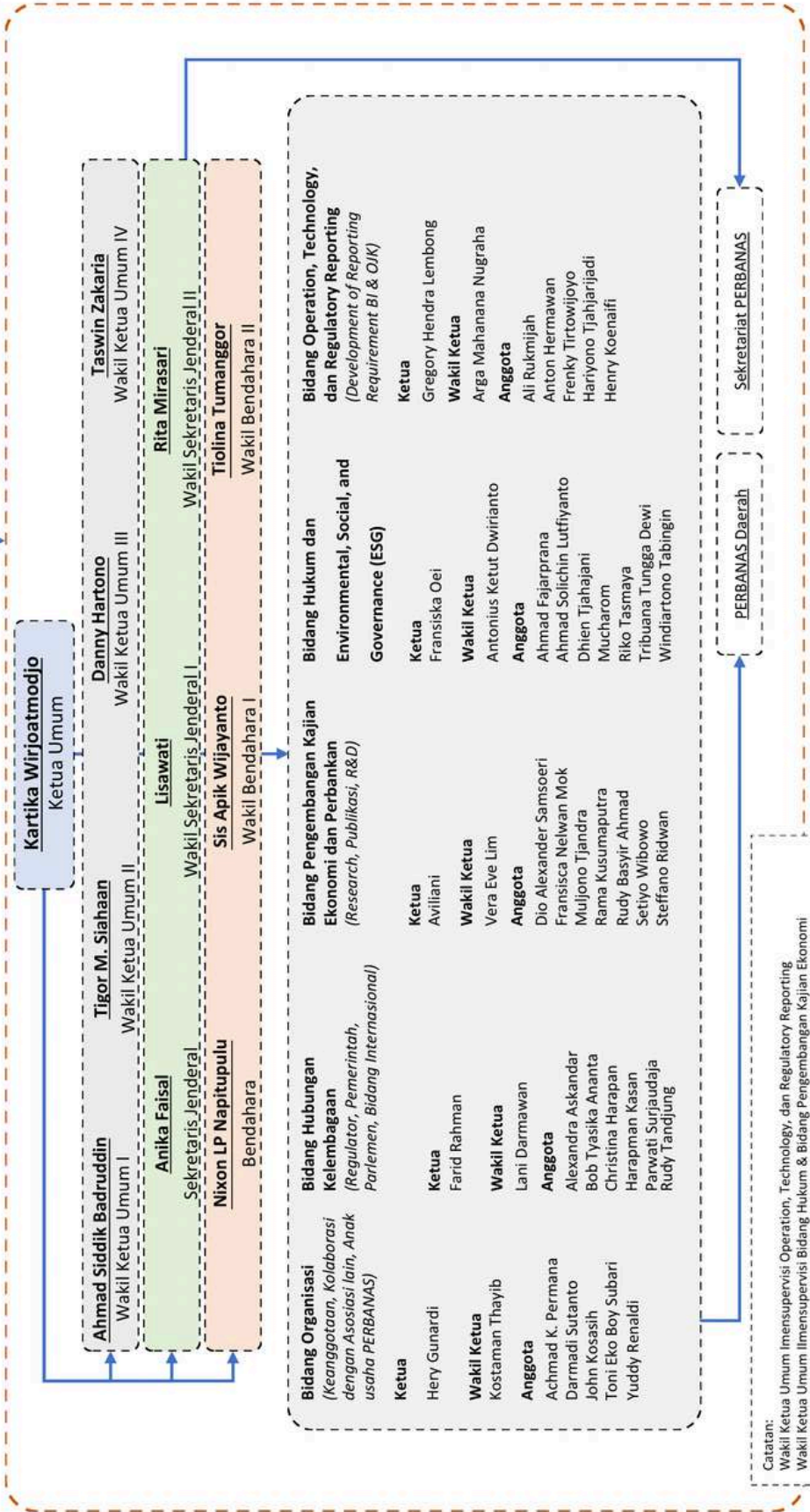
D

- b B
- m B
- B
- B
- B B
- B B
- B B B
-
- B B

B B s e E E

E E B E E B

Badan Pengawas
 Ketua: **M. Chatib Basri**
 Anggota:
 • Chandra Hamzah • Nelson Tampubolon • Ridha D. M. Wirakusumah
 • Edwin Gerungan • Pahala N. Mansury • Suwartini
 • Jahja Setiaatmadja • Rachmad Mulla Suryahusada • Timoty E. Marnandus



Catatan:
 Wakil Ketua Umum I: Ahmad Siddik Badruddin
 Wakil Ketua Umum II: Tigor M. Siahaan
 Wakil Ketua Umum III: Danny Hartono
 Wakil Ketua Umum IV: Taswin Zakaria
 Sekretaris Jenderal: Anika Faisal
 Wakil Sekretaris Jenderal I: Lisawati
 Wakil Sekretaris Jenderal II: Rita Mirasari
 Bendahara I: Sis Apik Wijayanto
 Bendahara II: Tiolina Tumanggogor



PERBANAS
PERHIMPUNAN BANK NASIONAL

K K



B
• e PC C B B B P B
B B B B B B
B B B B B
e PC C B B B Bo B
o B B B B
o B BP B
) B w B B B
P B w B B p
o B) B B p
B B B
p B " B B B
) B BC B/ B
B) B P B
) B
o B B B p BP
w B B p
• BP B B e PC C B
B B B B B
o B B B
o Be PC C B
o B B B B
) B B B
)
o B B PRB B B
• B B P B
BP B B e PC C B
B B B
• P B BC eC BR BP
p B B CRp B o
1 B Re B B
• e PC C B B B B B C
• B Be PC C B
• B B Be PC C
d
• B B B B B
B B B B B
• B C B " B)
e PC C B B Ba B B
• B B B B B
B B B B a B
B B B B B

• B B B)
e PC C B B B
• B B B B B
B B B B B e PC C
B B e PC C B a B
• B a 1 B B
B B B B B
C B B B B B
B B B B BB
• B B B B
B B B B B
B B B 1
• B B B B B
B B B B B
B B B B B
B B B B B
B
d B
B B B B B
B B B B e PC C B
B B B B B B
B B B B B
B B B B e PC C
B B B
• B B B Be PC C B
C B B B B BC 1
B B/ B) B /) B
B B B
• e PC C B B B e PC C B
/ B Ba B B B
B B B B B
• B B B e PC C
B B B B
B 1 B e PC C
d B
• B B B B B
o B/ B B BC B Ba
) B /)
o B B B paB B B
o B B B BP B B
P B B B BP
1
• B B B B B
B B B B B)
a B B B B Be
p B B

- B B B B
B B B B B
B B(B (B
B B
◦ B , B B C B a
(B B B B ,(
B B(B B B B
◦ B B B B B B
, (B B B (B B B
- P B B B B B B
- B B B B B
◦ B B B B B B
(B B B B B B
◦ B B B B B B
a B P B B B B
R B B B B
e PC C B B B B B B
B B B B B B
0
• R B B B B B B
R B B B B B B B
C B B B B B B
R o0 B C P C B B P B B
B B B B B B
• P B B B B B C eC
P B B B B B B eC
P B B B B a B B
B B B
- b** B B B B B
• Re B B B B B B
B B B B B B
0 B B B B B B
◦ B B - B B
B B B B B B
• Ro B B B B B B
B B B B B B
• P B B B B B
B C B B B B B
B B B B B B
• B B B B B B
• B (B (B - B
B B(B B C
, B B B B

- b** B B B B B ,
• B , (B B B B B C
e PC C
• B B B B B B
(B B B B B P
B B B B B
• P B B B C B B B C B ,(
B B C B B B B C B B
• B B B B B B
B (B B B B B B
B B B B B , (B B
, B B B B B B
B B
• a B B B B B B
p B B B B B B
◦ B, B B B B B , (B
B B
◦ B B B B B B
◦ B B B B B B
◦ B B B B B B
• B B B B B B
B B B B B B
b B B B B B
• R B B B B B B
R B B B B B B
• B B B B B B C B
B P B B B B B B
◦ o p a B B B B - B B B
B B B B B B B B
• a B B C P R B B
R B B B B C P C B B B
• B B B B B B B B
B B B B B B
• P B B B B B B B
- B a B B B B B B



PERBANAS
PERHIMPUNAN BANK NASIONAL

a



ASOSIASI BLOCKCHAIN INDONESIA PERBANAS PERBANAS INSTITUTE

APLIKASI BLOCKCHAIN DALAM DUNIA PERBANKAN DAN KEUANGAN

Rabu, 8 Februari 2023 Pukul 10.00-12.00 WIB
Via Zoom Meeting - Online

 **Register Now!**
bit.ly/webinarperbanas

Narasumber:

- **Gregory Hendra Lambong**
Rencus Ribang Operation, Technology, dan Regulasi (R3) PT Bank ABC
- **Dr. Herya Damar Widjuputra**
Wakil Dekan Bidang Akademik & Penelitian ITS Business Institute
- **Muhammad Yusuf Musa**
Head of Digital Strategy Nominex
- **Ashi Karningsih, MM**
Chairwoman of Perbanas Blockchain Indonesia

+62 812 801 2828 webinar@perbanas.org www.perbanas.org @perbanas.institute @perbanas_official

D Bp dD D B Bp dD D B B B B B B

B B

PERBANAS
PERKUMPULAN BANK-BANK NASIONAL

FORUM DISKUSI

UNCOVERING CYBERCRIME THROUGH THE POWER OF COLLABORATIONS

15 Februari 2023
Pukul 08.00 - 13.00 WIB

Hotel JS Luwansa Jakarta

Keynote Speaker

- Teguh Artiyadi**
Dit. Direktur Tata Kelola Aplikasi Informatika - Kementerian Komunikasi dan Informatika RI
- Sergjo**
Deputi Komisiner Edukasi dan Perlindungan Konsumen - OJK
- Hendra Lembong**
Ketua Bidang Operasional Technology dan Regulatory Reporting - Perbanas

Opening Remarks

Speaker

- Sulistyo**
Direktur Strategi Keimanan Siber dan Sandi, Deputi Bidang Strategi dan Kebijakan Tata Kelola Keimanan Siber dan Sandi - BSSN
- Wani Sabu**
Ketua Komite Cyber Security - Perbanas
- Brijen, Pol. Adi V.A Bachtir**
Direktur Tindak Pidana Siber - Bareskrim Polri

Moderator

- Prof. Richardus Eko Indrajit**
Akademisi dan Pakar Teknologi dan Informatika

Link Registrasi
https://bit.ly/registrasi_forum_diskusi

021-5220388 | sekretariat@perbanas.org | www.perbanas.org | Perikumpulan Bank Nasional | perbanas_official



D

D

D

D

D

D

D

D

D

D

D



g B B B B B B B
B B



B B B0 gD D B
B B



B B B B 1 B BI SD D

B B



12gBI SD D B B B B B B B
B B B D B B B B
B

B B



m B (C B B B BCn
m
B B



U B B B B
B B B B B
B B

B01 g B B B
B B B



U B B B B B
B B
B B

B B B





n TC C B BT B B B B B B)
B B



n TC C B B1 na) B B Ci B B
1 B B B1n i
B B



B B B B B O k E E
B B



B B B E B O k E E
B B



h B B B 1 B B B B mC
a B B B mC B B B
B B

PERBANAS
PERBANKAN INDONESIA

CFO FORUM PERBANAS "NAVIGASI TANTANGAN PERBANKAN"

27 September 2023
Pukul 08.00 - 12.00 WIB | Financial Hall, Graha CIMB Niaga, Jakarta

Welcome Remarks
Kartika Wijiastuti
Ketua Umum PERBANAS

Keynote Speaker
Detri Aneli
Kepala Departemen
Pergawain Bank Pemerintah
Ditindak Jais Keuangan

Panelist

- Wibnu Wardana**
Chief Financial Bank
Domestik & Komis
Yaku Arahkan Jais
Perbankan dan
Keuangan PERBANAS
- Teody Pringgdi**
Pejabat Supremasi
Pengelolaan dan
Keperawatan Jais
Bank Indonesia
- Harsono Joko Susilo**
Direktur Teknologi
Informasi dan Komunikasi
Direktorat Jenderal Regu

Moderator

- Annie Simangunsong**
Senior Manager
Mondiri Institute
- Freddy Kurnianto**
Senior Vice President
Head of Accounting
Bank Mandiri
- Yunanda Mestis Philip**
Senior of Tax Bank BCA &
Senior Kepala Kantor Regu
PERBANAS

Informasi
+62 21 93841 0000 (Seluruh Indonesia)
@perbanasofficial

www.perbanas.org | #selengkapnyaBankIndonesia | perbanas_official



b1 B B m aC C B B B
B B



p dD D B B B B B B
I B B B
B B



I Bp dD D B B B B
B B



m YD D B BY B B h hD D)

B B



B B B B Bm YD D B B
B B B B Bh B BY

B B



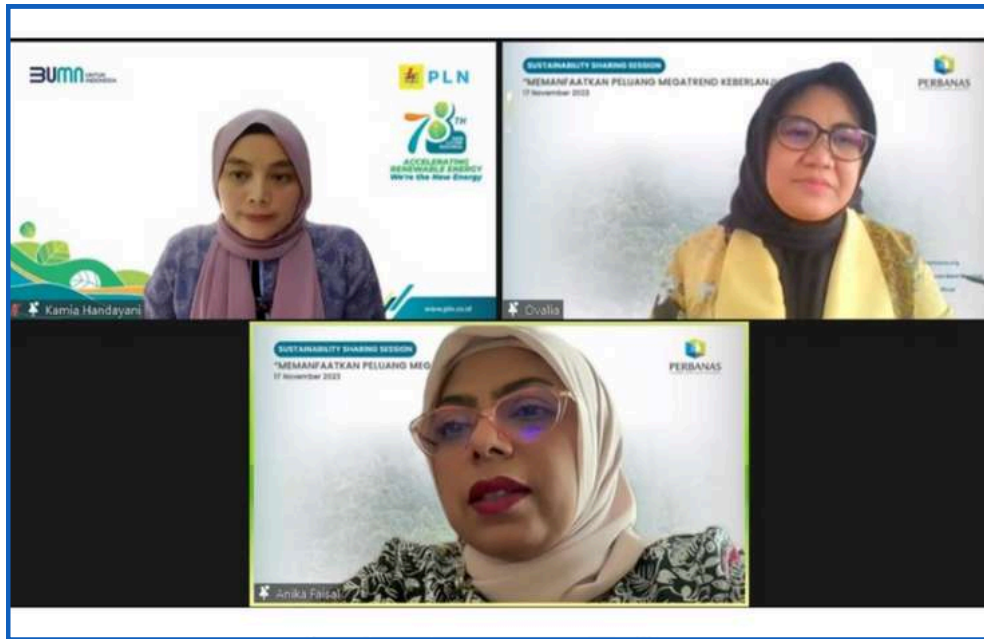
t dD D B B B Bt dD D B B
B B B B
B B



D B Bs dD D B B
B B



B B B B B B Bs dD D
B B



K K K K K K K

K K





B B B B B
B B
B B



d B B B B B B B B B
B B
B B



f B B B B sC B B
B B



f B B B B sC B B B
B B



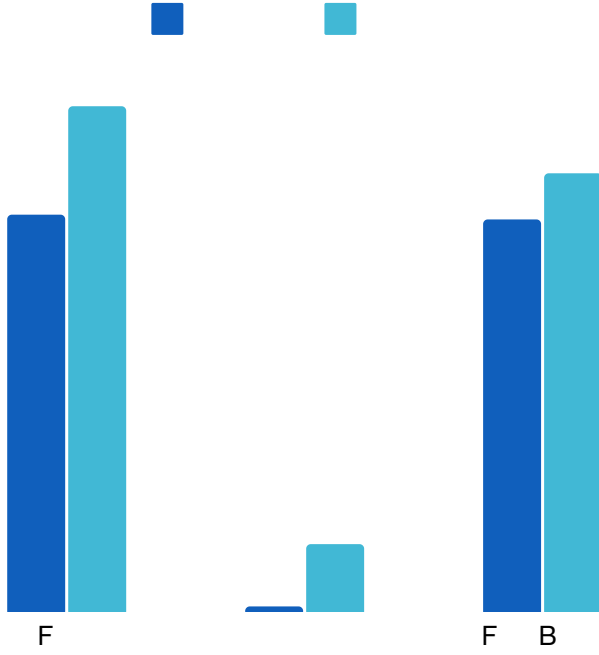
PERBANAS
PERHIMPUNAN BANK NASIONAL

B
nE E B



D D BD& D
B B

B B BD B B B



D B B B B B B
B B B B B B B
D B B B B B B
B B B B B B B
F B Bc B B B B
B B B B B B B
B B B B B B B
B B B B B B B
B B B B B B B
c B B Bc1,,B B B
B B B B B B B

B

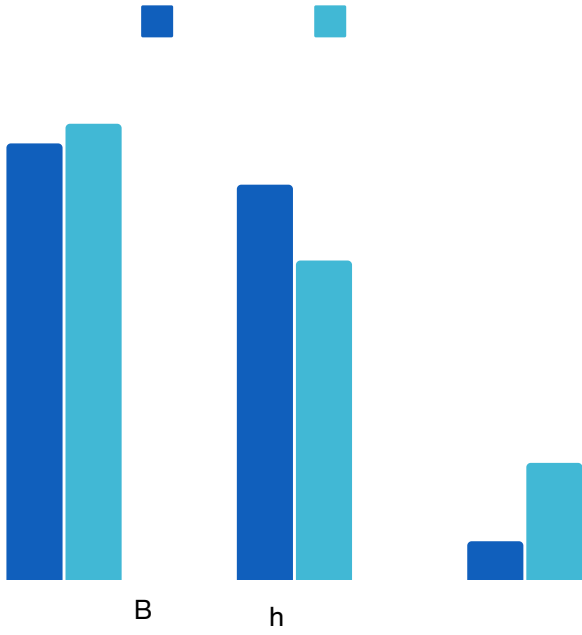
k			
F B			
F B B			
B			
B B			
B B			
F B			
B B B B			

D D BD D
B B

B B BD B B B

B B B B B B B B B B B B B B B B
B B B B B B B B B B B B B B B B B
B B B B B B B B B B B B B B B B B

B



m			
B B			
h			

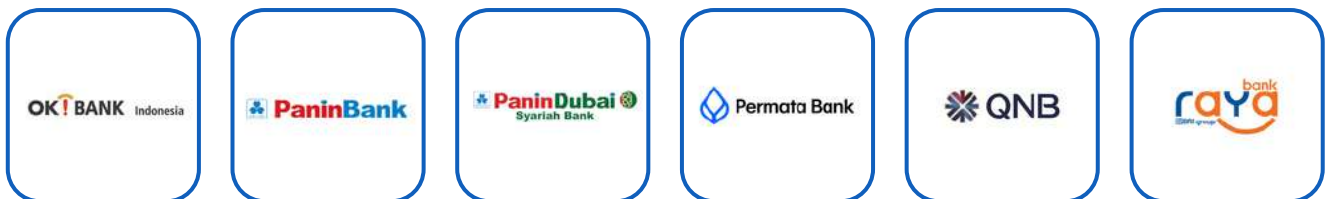
h h B Bu h E E B

B



h h B Bu h E E B



B





PERBANAS
PERHIMPUNAN BANK NASIONAL

E 6 E E @E E
E E E E

E E E E E E E
5 E E E E

s EE



E

